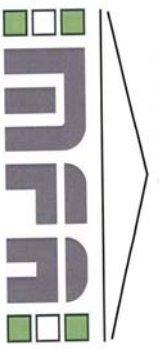


MONTGOMERY . FORGAN . ASSOCIATES

ARCHITECTS +
TOWN PLANNING
CONSULTANTS

EDEN PARK HOUSE
CUPAR, FIFE, KY15 4HS. TEL 01334-654936 FAX 01334-656629
e-mail: admin@montgomery-forgan.co.uk



Project

CHANGE OF USE OF LAND FROM
80 HOLIDAY CARAVANS TO 36 CHALET TYPE
RESIDENTIAL CARAVANS,
LOW LANE, HIGH LEVEN FOR
WELCH FAMILY LLP

Drawing

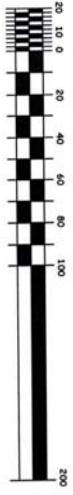
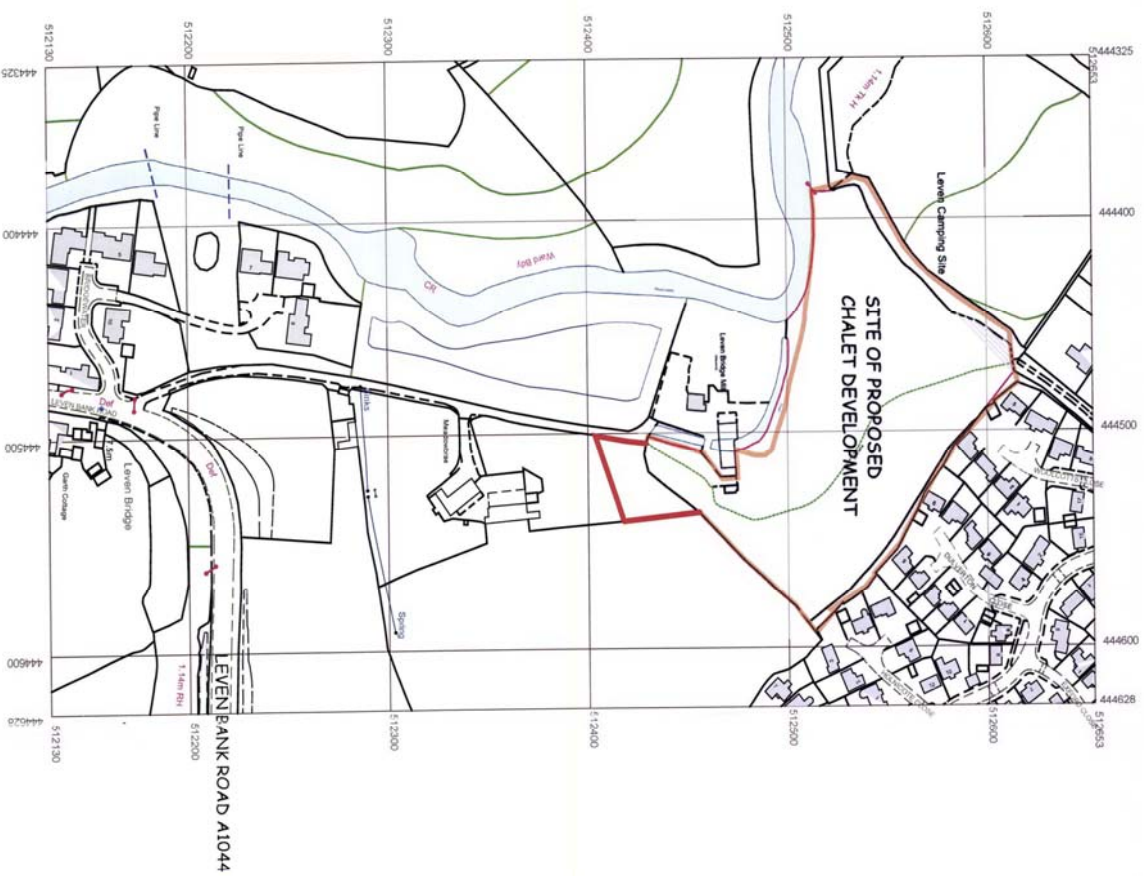
LOCATION PLAN

Scale	Date	Revision
1:2500	JUNE 2012	Checked
Drawing Number		Revision

5186 / C / 01



12 / 1537 / --



SCALE 1:2500 m

©CROWN COPYRIGHT 2012.
ALL RIGHTS RESERVED.
LONDON: NS 483059/0107

1. THIS DRAWING IS COPYRIGHT, RESERVED AND REMAINS THE PROPERTY OF MONTGOMERY FORGAN ASSOCIATES.
2. THE CONTRACTOR AND HIS SUBCONTRACTORS/SUPPLIERS ARE TO VERIFY ALL DIMENSIONS AND LEVELS ON SITE PRIOR TO COMMENCING ON SITE/MANUFACTURE OF GOODS/MATERIALS.
3. THE CONTRACTOR IS TO BRING TO THE NOTICE OF THE ARCHITECT ANY DISCREPANCIES CONTAINED IN THIS DRAWING PRIOR TO WORK COMMENCING, WHERE RELEVANT THIS DRAWING IS TO BE READ IN CONJUNCTION WITH ALL RELEVANT DESIGN DRAWINGS AND SPECIFICATIONS.



MOSES STANBURY, 2004 FOR CHARMAN STEETS, NINEBARNS
 CHARMAN STEETS AND CONTROL OF PAVEMENTS ACT 1980 - SECTION 3

1. THE DRAWING IS A PRELIMINARY DESIGN AND IS NOT TO BE USED FOR CONSTRUCTION OR FOR ANY OTHER PURPOSE WITHOUT THE WRITTEN PERMISSION OF THE ARCHITECTS.

2. THE ARCHITECTS ACCEPT NO LIABILITY FOR ANY DAMAGE TO PERSONS OR PROPERTY ARISING FROM THE USE OF THIS DRAWING.

3. THE ARCHITECTS ACCEPT NO LIABILITY FOR ANY DAMAGE TO PERSONS OR PROPERTY ARISING FROM THE USE OF THIS DRAWING.

4. THE ARCHITECTS ACCEPT NO LIABILITY FOR ANY DAMAGE TO PERSONS OR PROPERTY ARISING FROM THE USE OF THIS DRAWING.

5. THE ARCHITECTS ACCEPT NO LIABILITY FOR ANY DAMAGE TO PERSONS OR PROPERTY ARISING FROM THE USE OF THIS DRAWING.

6. THE ARCHITECTS ACCEPT NO LIABILITY FOR ANY DAMAGE TO PERSONS OR PROPERTY ARISING FROM THE USE OF THIS DRAWING.

7. THE ARCHITECTS ACCEPT NO LIABILITY FOR ANY DAMAGE TO PERSONS OR PROPERTY ARISING FROM THE USE OF THIS DRAWING.

8. THE ARCHITECTS ACCEPT NO LIABILITY FOR ANY DAMAGE TO PERSONS OR PROPERTY ARISING FROM THE USE OF THIS DRAWING.

9. THE ARCHITECTS ACCEPT NO LIABILITY FOR ANY DAMAGE TO PERSONS OR PROPERTY ARISING FROM THE USE OF THIS DRAWING.

10. THE ARCHITECTS ACCEPT NO LIABILITY FOR ANY DAMAGE TO PERSONS OR PROPERTY ARISING FROM THE USE OF THIS DRAWING.

MONTEGOMERY FORGAN ASSOCIATES



LIGHTING BOLLARD

Project
 CHANGE OF USE OF LAND FROM RESIDENTIAL COMMERCIAL LEVEN DAMEN SITE LOW LAND WEST OF LEVEN TWP

Site / Location
 SITE / ROCKFAN

Scale
 1:500

Date
 24 JUNE 2012

Drawn
 CHAMBERLAIN

Checked
 MONTGOMERY

Designing Authority
 MONTGOMERY

Scale / C / D
 A

THIS DRAWING IS A PRELIMINARY DESIGN AND IS NOT TO BE USED FOR CONSTRUCTION OR FOR ANY OTHER PURPOSE WITHOUT THE WRITTEN PERMISSION OF THE ARCHITECTS.

THE ARCHITECTS ACCEPT NO LIABILITY FOR ANY DAMAGE TO PERSONS OR PROPERTY ARISING FROM THE USE OF THIS DRAWING.

RECEIVED
 30 JUL 2012
 DATE RECEIVED